



Maine Department of Corrections

Leveraging Technology For Research

An overview of a centralized data collection process

American Probation Parole Association ~ Presentation

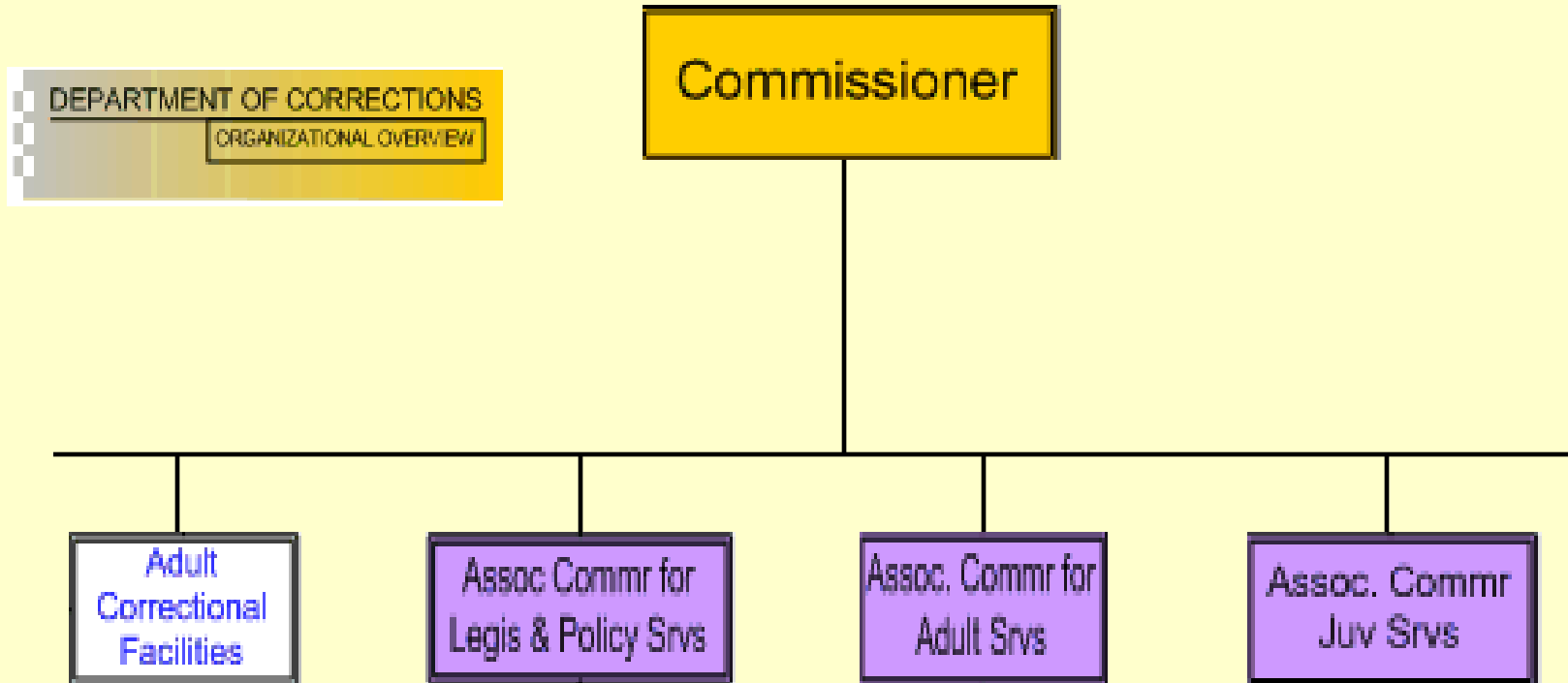


Topics

- **Maine Dept. of Corrections – A Centralized Structure**
- **CORIS Offender Management System – Background**
- **Current Functionality**
- **Data Collection Process - Overview**
- **Informed Decision Making and Other Benefits**
- **Challenges & Next Steps**



A Centralized Structure





Adult Community Services



Staffing Structure

- **Associate Commissioner for Adult Community Services**
 - **4 Regional Administrators**
 - **4 Assistant Regional Administrators**
 - **2 Resource Coordinators**
 - **74 Probation Officers**
- ~Specialized Caseloads in Sex Offenders and Domestic Violence**



Supervision Types

- **Parole:** “Has nearly been phased out. Represents a very small number of Inmates”
- **Supervised Community Confinement:** “Generally low risk inmates meeting requirements are allowed to serve the remainder of a sentence under community supervision”
- **Probation:** “A term of supervision ordered as a disposition by a sentencing Court. Is the majority of the Adult Community population”



Client Supervision Statuses

- **Active**

Interstate Compact IN

Parole

Pending Violation

Pending Violation – Incarcerated

Probation

SCCP



Supervision Statuses Cont...

- **Passive**

County Jail

Inactive

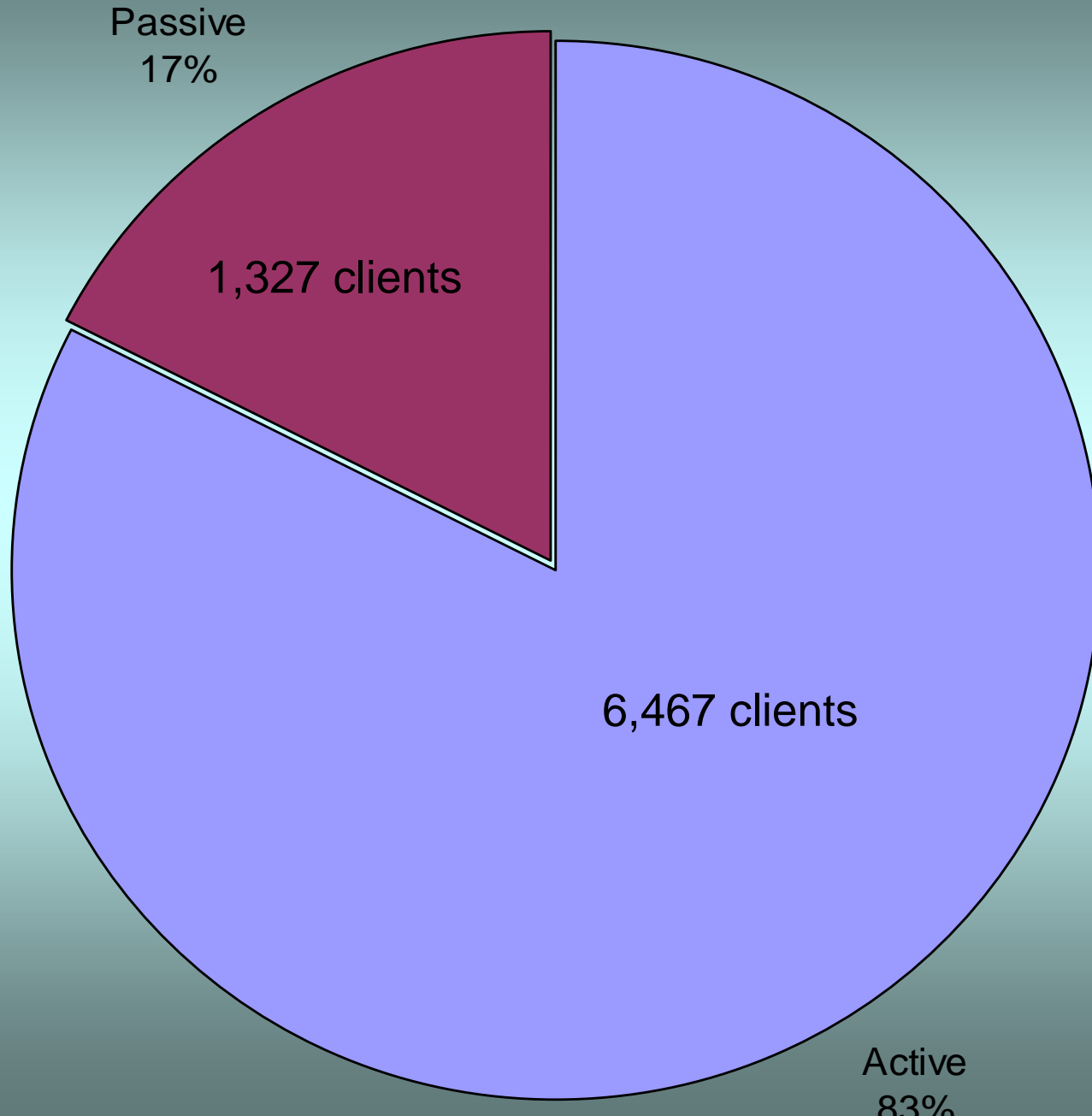
Incarcerated

Interstate Compact OUT

Partial Revocation – County Jail

Warrant Absconded

Client Supervision Status





CORIS Offender Management System and Current Functionality



Offender Management System

CORIS • CORrections Information System

- **A fully integrated, web based MIS system designed to manage all aspects of MDOC data.**
- **In production since 2003 with detailed records for over 60,000 clients**
- **Extensive operational and reporting functionality including:**
 - ✓ **Adult and Juvenile Facility Corrections**
 - ✓ **Adult and Juvenile Community Services**
 - ✓ **Central Office Administration**



Current Functionality

Community

- Intake
- Alerts & Concerns
- Education
- Case Load
- Sentence Calculation
- Charges
- Detentions
- Conditional Release
- Conditions
- Informal Resolution
- Interstate Compact
- Supervised Community
- Confinement
- Case Plan
- Programs
- Assessment
- LSI / YOLSI
- Probation Statistics
- Road Notes
- Case Load Report
- Form Letters
- Civilian Contacts
- Message Board
- Sex Offender Assessment
- Unassigned Cases
- Restitution and Fees

Institution

- Intake and Admit
- Release Date Calculations
- Charges
- Sentences/Dispositions
- Classification
- Housing Assignments
- Institutional Jobs
- Good Time Sentence Adjustment
- Institutional Incidents
- Escapes
- Keep Separates
- Special Management
- Programs and Treatment
- Transport and Transfer
- Victim Notification
- Prisoner Property
- Civilian Contacts
- Message Board
- Batch Count Reports
- Medicaid / MaineCare
- Furlough
- Classification Rating
- State Property
- Restitution



The Data Collection Process



Research Team

Subcommittee Members and Responsibilities

Agency	Representative(s)	Roles
MDOC	Administration NIC Project Manager Business Analyst Management Analyst	<ul style="list-style-type: none"> ▪ Chair & staff research subcommittee ▪ Liaison and ensure ongoing communication between research subcommittee, internal policy committee, and other DOC staff, RCAs ▪ Identify intersection issues between implementation and research ▪ Review and provide comment on research reports
SAC	Director's Office Research Associates	<ul style="list-style-type: none"> ▪ SAC / Cooperative agreement management & reporting with NIC ▪ Lead the research, working in collaboration with DOC to guide the work of the research subcommittee ▪ Data collection, compilation, analysis, and reporting

- MDOC – Maine Department of Corrections
- SAC – University of Southern Maine, Statistical Analysis Center



Prospective Cohort Sampling

Sample of 1,200 clients

- 2004 –new intakes for 04’ (3 year tracking)
- 2005 –new intakes for 05’ (2 year tracking)
- 2006 –new intakes for 06’ (1 year tracking)
- 2002 –baseline



Data Dictionary

Making Sense of It All

Review of Variables

- Data Availability
- Policy / Practice Issues

Divide and Conquer

- Demographic Information
- Individual Case Level (*supervision / assessment*)
- Case Level Variables (*treatment / programs*)
- Case Level Outcomes (*arrest and revocation*)



Data Extraction

Step 1 - Interpret and Identify Variables

- What are the data dictionary requirements?
- Matching of the requirement with corresponding data in CORIS
- Working through definition barriers

Step 2 - Analyze

- Location in CORIS database
- Special considerations and filters to be applied



Data Extraction Cont...

Step 3 – Extract

- Queries written to extract data from CORIS
- Exported to Excel

Step 4 – Quality Assurance

- Spot checking ~ Extraction vs. CORIS
- Validity and Consistency



Data Extraction Cont...

Step 5 – Reporting

- Excel file sent to S.A.C. for analysis and conversion to SPSS format.
- Queries for each module converted to a single report
 - Reports accessible via intranet site
 - Date parameter allows for flexibility



Sample Results

Cohort demographics: Age as of 6/30/2005

The sample population ranged in age from 18-80. Only 2 cases did not report age.

	Age Range	
	Frequency	Percent
Under 25	297	24.8
25-34	395	32.9
35-44	294	24.5
45-54	157	13.1
55-64	44	3.7
Over 65	11	0.9
NA	2	0.2
Total	1200	100



Results Cont...

Cohort demographics: Gender and Race

Gender	Number	Percent
Female	202	16.8%
Male	998	83.2%
Total	1,200	100.0%

Race	Count	Percent
White	1,103	91.9%
Black or African American	23	1.9%
American Indian or Alaska Native	12	1.0%
Asian	5	0.4%
Other	19	1.6%
NA	38	3.2%
Total	1,200	100.0%



Results Cont...

Cohort demographics: LSI Score

LSI Rating		
	Frequency	Percent
Administrative	250	20.8
Moderate	743	61.9
High	97	8.1
Maximum	9	0.8
NA	101	8.4
Total	1200	100.0

The average score was 17.5.



Results Cont...

Status of 2004 Probation cohort as of 6/30/2005

Status as of 6/30/2005	Frequency	Percent
Probation	584	48.6
Discharged (Inactive)	359	29.9
Pending Violation - Incarcerated	59	4.9
Pending Violation	58	4.8
Incarcerated	52	4.3
Warrant Absconded	36	3
Interstate Compact Out	17	1.4
Partial Revocation - County Jail	17	1.4
Interstate Compact In	6	0.5
County Jail	5	0.4
Partial Revocation - incarcerated	4	0.3
SCCP	2	0.2
Active	1	0.1
Total	1200	100



Where we are in this process?

- Two modules completed (2004 cohort)
 - Demographic Information
 - Individual Case levels
- Two modules to go
 - Case Level Variables (treatment / programs)
 - Case Level Outcomes (arrest and revocation)
- It is still early



Informed Decision Making and Other Benefits



Informed Decision Making and Benefits

- Has provided us with a real “first look” at many areas; Assessments / populations / caseloads / violations etc..
- Distinction of Active and Passive Client Status Groups. Has helped to distinguish workload vs. caseload
- Policy makers reviewing data on “Administrative” (low risk) cases for possible case bank.
- Monitoring of “case planning” implementation.



Informed Decision Making and Benefits

- Elimination of “paper” LSI-R assessment.
Has resulted in higher quality data and simplifies collection.
- Added “age of first arrest” field to CORIS.
Recommended variable for “proxy” assessments.
- Trend and activity identification.... violations handling
- Data entry discrepancies and issues become evident.
Can be addressed appropriately with practice, policy or
functionality changes.
- Designed with a capacity to continue research beyond the
scope of the project.



Challenges

- Time consuming process with limited resources.
- External data sources, (criminal history records)
- Learning and understanding effective methods of analyzing all the data.

The good news.....

Once it's done, it's done



Next Steps

Over the next 6 months.....

- Complete and automate all 4 modules (2004 cohort)
- Determine the 2005 cohort
- Extract the 2002 baseline cohort
- Implement and automate intermediate measure reports



Key Contacts

- **Dave Packard - CORIS Project Manager**
dave.packard@maine.gov
- **Chris Oberg – CORIS Business Analyst**
christopher.r.oberg@maine.gov
- **Lisa Nash – MDOC Project Manager**
lisa.k.nash@maine.gov
- **Mark Rubin – Research Associate**
mrubin@usm.maine.edu
- **Maine Statistical Analysis Center**
<http://muskie.usm.maine.edu/justiceresearch>